

STEAD & WILKINS

Precision Engineering & Fabrications



Data Sheet 00059

Monitor Yoke

1 x Single monitor housing:	SAW5288
1 x Double monitor housing:	SAW5777
1 x Three monitor housing:	SAW5110
1 x Four monitor housing:	SAW6300
2 x Double monitor housing:	SAW5128
2 x Three monitor housing:	SAW5129
2 x Four monitor housing:	SAW5700
2 x Five monitor housing:	SAW5709

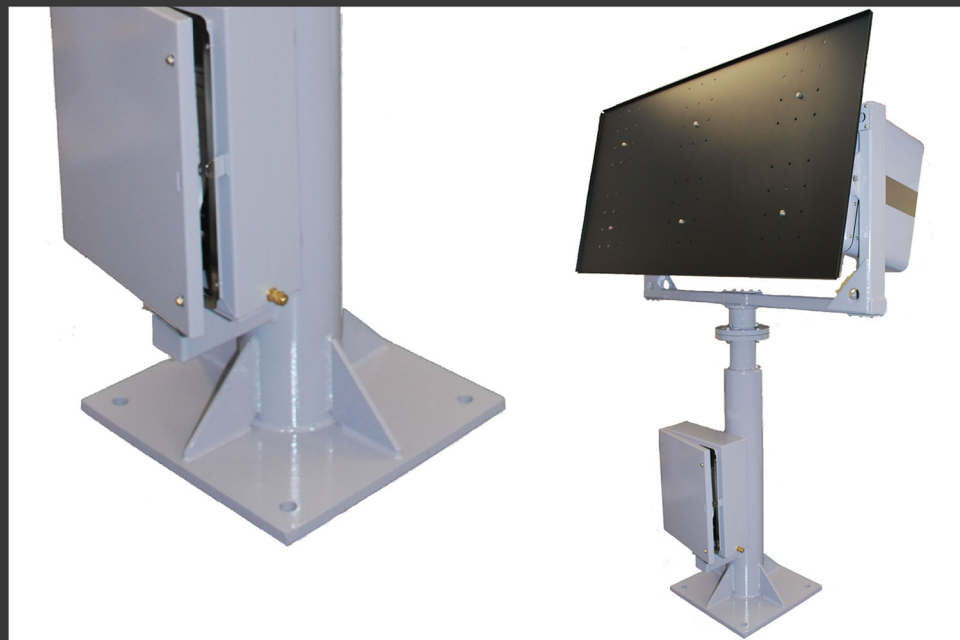
The yokes have been specially designed to interface with our monitor housings and to ease assembly. Yokes have been manufactured to hold from one to two sets of housing. Cable access has been provided at each bend to assist wiring up of the monitors. This access is covered by secure cover plates. The yoke allows for virtually 360° positioning in the horizontal plane and 45° down in the vertical.

Finish:

N1 of RT/CE/C/002

Blast Clean to surface standard Sa3

- 1-coat Aluminium zinc spray DFT: 150-200µm
- 1-coat Intergard 214 DFT: 25µm
- 1-coat Intercure 200 DFT: 100µm
- 1-coat Intercure 420 DFT: 125µm
- 1-coat Interthane 990 (colour to be specified) DFT: 50µm



Key Features:

Robust construction

Cable management

Access covers to easy installation

Rust resistant coating

Stead & Wilkins Ltd
Jolly Farmers Wharf
Thames Road
Crayford
Dartford
Kent
DA1 4QH

Tel: +44 (0)1322 529134

Fax: +44 (0)1322 550314



Certificate FM33624
BS EN ISO 9001:2008



STEAD & WILKINS

Precision Engineering & Fabrications



Data Sheet 00059

Monitor Yoke

Technical Specs

1 x Single monitor housing – SAW5288

Weight 36kgs; Width 600mm; Depth 280mm; Height 800mm;

1 x Double monitor housing – SAW5777

Weight 40kgs; Width 1000mm; Depth 280mm; Height 800mm;

1 x Three monitor housing – SAW5110

Weight 44kgs; Width 1400mm; Depth 280mm; Height 800mm;

1 x Four monitor housing – SAW6300

Weight 50kgs; Width 1800mm; Depth 280mm; Height 800mm;

2 x Double monitor housing – SAW5128

Weight 55kgs; Width 1000mm; Depth 280mm; Height 1500mm;

2 x Three monitor housing – SAW5129

Weight 60kgs; Width 1400mm; Depth 280mm; Height 1500mm;

2 x Four monitor housing – SAW5700

Weight 72kgs; Width 1800mm; Depth 280mm; Height 1500mm;

2 x Five monitor housing – SAW5709

Weight 90kgs; Width 2200mm; Depth 280mm; Height 1500mm;

Two monitor post are required to support this unit.

Accessories available

Model SAW5229 – Earth strap, used to bond between yoke and monitor posts.

Key Features:

Robust construction

Cable management

Access covers to easy installation

Rust resistant coating

Stead & Wilkins Ltd
Jolly Farmers Wharf
Thames Road
Crayford
Dartford
Kent
DA1 4QH

Tel: +44 (0)1322 529134

Fax: +44 (0)1322 550314



Certificate FM33624
BS EN ISO 9001:2008

