

STEAD & WILKINS

Precision Engineering & Fabrications



Data Sheet 00054

Monitor Junction Box

MJB Enclosure: Model SAW5956

MJB Enclosure & Stand: Model SAW5739

This unit is available separately or with a stand. The box is manufactured in 316L stainless steel and protection rated to IP66. It has 1800 opening lid to facilitate installation and has provision for a padlock for security. Internally fitted with a stainless back plate and 2 hole gland plate.

The standard stand height for the box is 670mm, but can be varied to suit install.

MJB Enclosure

Finish:

All units are painted to individual TOC requirements, Cleaned and de-greased.

2 coat RT98 Interseal 670 surface tolerant epoxy primer DFT: 200µm

1 coat RT98 acrylic urethane finish coat

Stand

Finish:

All units are painted to individual TOC requirements, Cleaned and de-greased

1 coat Interpon APP120 cured 10min @ 160° C or 5 min @ 200° C

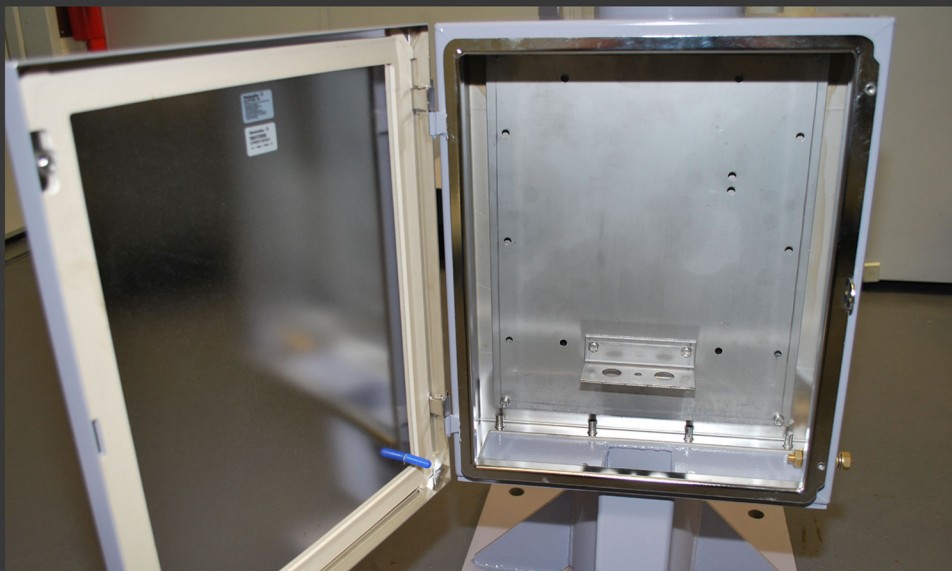
1 coat powder coat. (Colour to be specified) 60% Gloss, cured to manufactured spec. Film thickness 120-150µm

MJB Enclosure – SAW5956

Weight 13.5kgs; Width 390mm; Depth 150mm; Height 460mm;

MJB Enclosure & Stand – SAW5739

Weight 30kgs; Width 400mm; Depth 250mm; Height 1130mm;



Key Features:

Stainless Steel construction

IP 66 rated

Available separately or with stand

Stead & Wilkins Ltd
Jolly Farmers Wharf
Thames Road
Crayford
Dartford
Kent
DA1 4QH

Tel: +44 (0)1322 529134
Fax: +44 (0)1322 550314



Certificate FM33624
BS EN ISO 9001:2008

Stead & Wilkins:
Supplying network
rail with bespoke
security

